

Downloading Trine GPS data to the Dell Axim PDA

The downloading process consists of three steps that are all performed on the PDA:

1. **Confirm the Bluetooth service is enabled.**
2. **Downloading GPS data to the PDA** using CRUX_LOG software.
3. **Transfer the data to the CF card** using File Explorer.

Step 1. Confirm that the Bluetooth service is enabled.

Both the Trine GPS and the Axim PDA must be turned on. If the blue light in the upper right corner of the Axim PDA is blinking, then you know Bluetooth service is enabled. Proceed with “**Step 2. Downloading the GPS data to the PDA**” on page 2.

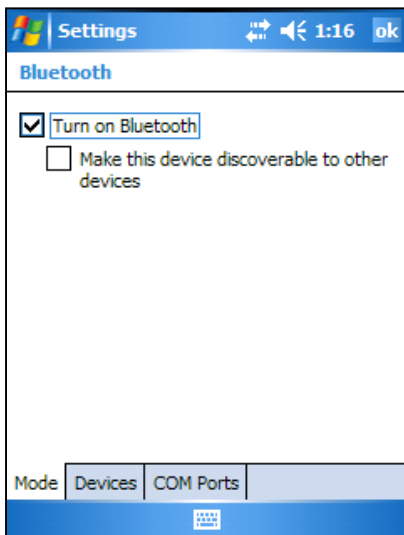
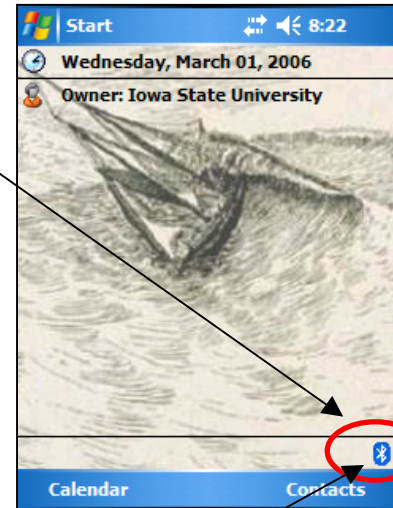
You can also confirm that Bluetooth service is enabled by looking at the Bluetooth icon at the bottom right corner of the screen.



If the icon is white (on blue), Bluetooth is enabled. **Proceed with “Step 2. Downloading the GPS data to the PDA” on page 2.**



If the Bluetooth icon is red (on blue), there is no connection and it must be turned on before continuing. Follow the instructions below to turn on the service.



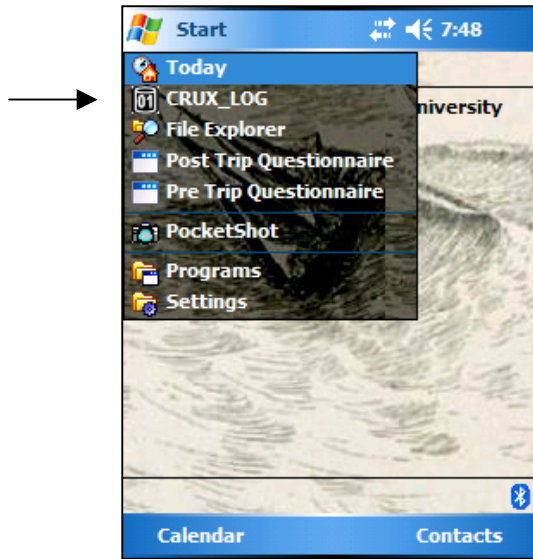
To turn on Bluetooth service, first **tap on the Bluetooth icon.**

Tap the checkbox for “Turn on Bluetooth”.

Close the screen by **tapping on ok** at the top. Continue with **Step 2. Downloading the GPS data to the PDA.**

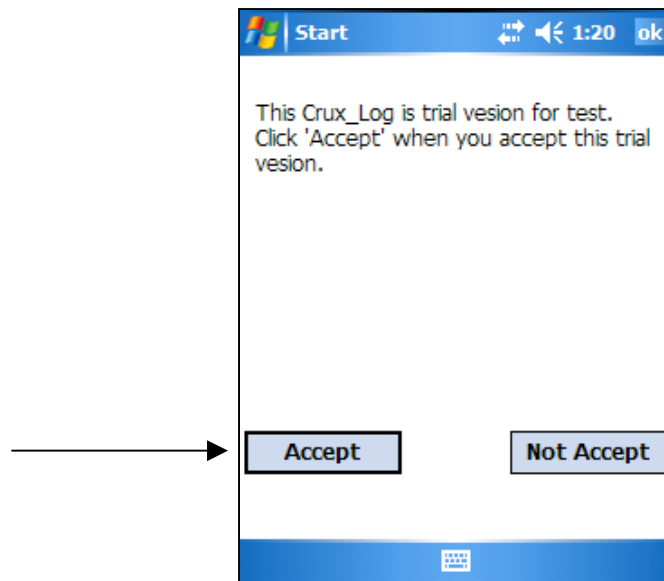
Step 2. Downloading data to the PDA from the GPS using CRUX_LOG software.

Tap on **Start** in the upper left of the screen; then choose **CRUX_LOG** from the menu.



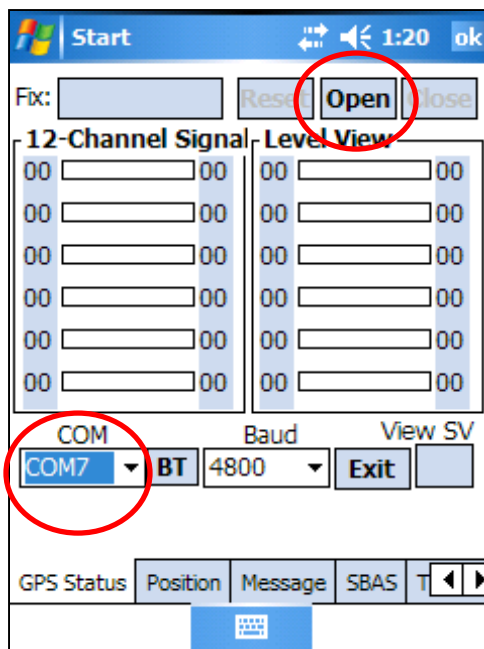
A screen will appear stating that this is a trial version.

Tap on **Accept**.



The GPS Status screen will appear.

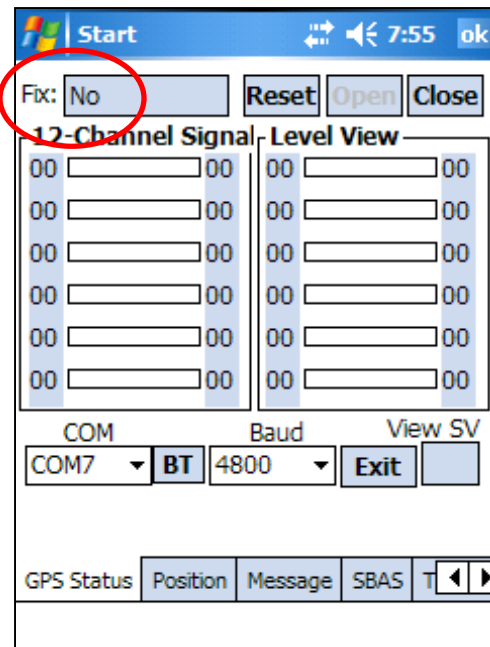
In the lower left part of the screen, confirm that COM7 is present, or **choose COM7** from the dropdown list.



Tap on the **Open** button in the upper right. Wait a few seconds.

After a few seconds, the Open button will be disabled (faint print) and the Reset and Close buttons will be enabled (dark print).

If you currently have a satellite fix, you will see activity on this screen. Regardless, the “Fix” field will no longer be blank. (It’s OK if it says “No.”)

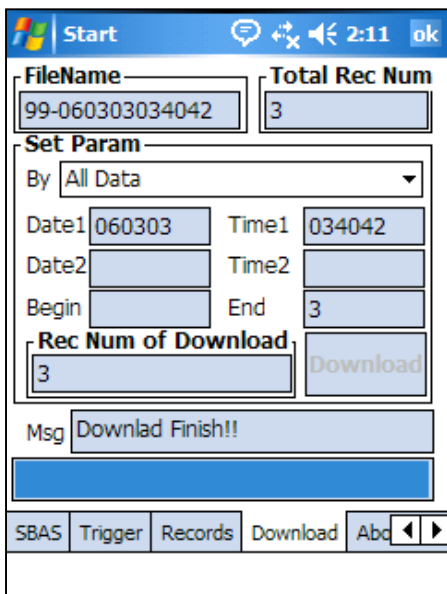
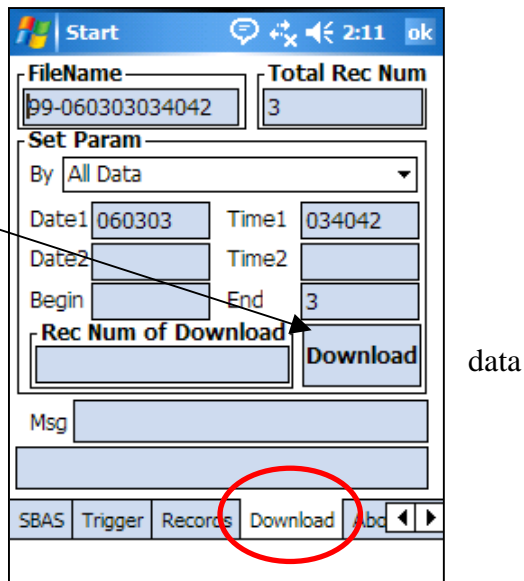


Next, locate the Download tab. To locate it, tap on the **right arrow** in the lower right corner until the Download tab scrolls over and becomes visible.

Tap on the **Download tab** (circled in red).

Then tap on the **Download button** on the right.

This actually downloads the data to your PDA.



When the Download button is light gray and the Msg box says “Downlad Finish!!” you have downloaded the data. (Yes, there is a typo in this crazy software. . .)

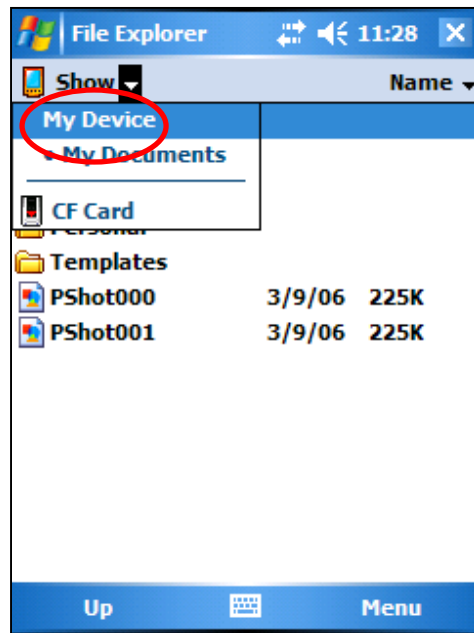
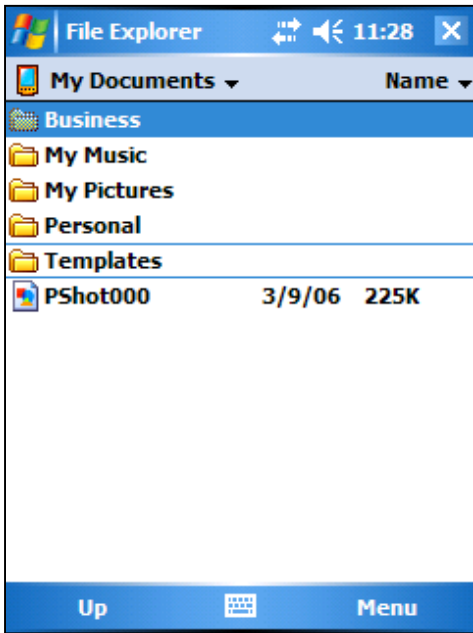
[If there’s no activity and the Msg box remains blank, try tapping the Download button again.]

Next you need to transfer the downloaded GPS data to the CF card. Leave CRUX_LOG open while you make this transfer, because you have one more task to do afterwards.

Step 2. Transfer the data to the CF card using File Explorer.

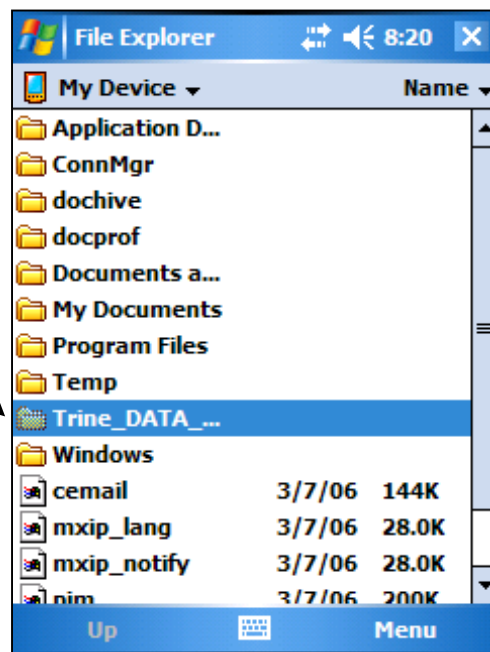
Leave CRUX_LOG open. Tap on **Start** and select **File Explorer** from the Start Menu.

File Explorer opens in different places at different times. You need to get to the “My Device” folder. If something other than My Device opens, as in this example, tap on the top heading (“My Documents” in the picture below) and select **My Device**.



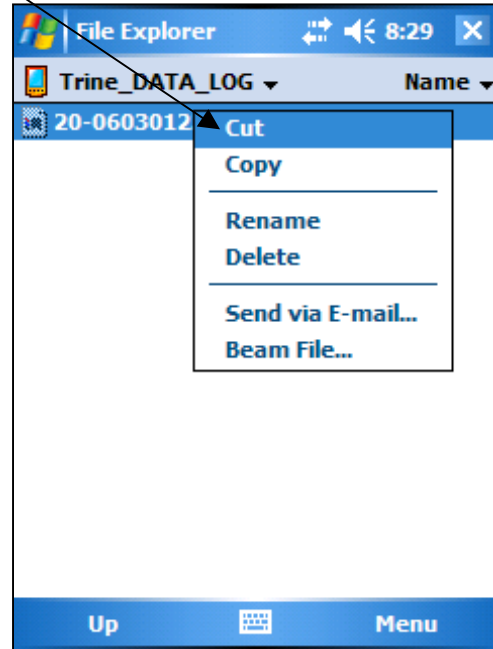
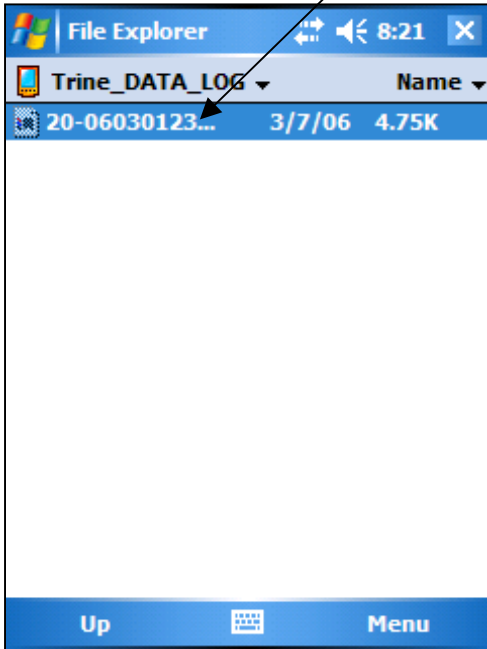
Tap on a folder called **Trine_DATA_LOG**.

If the keyboard opens up along with File Explorer, it may be obscuring the Trine_DATA_LOG file. If so, minimize the keyboard so you can see the whole screen.

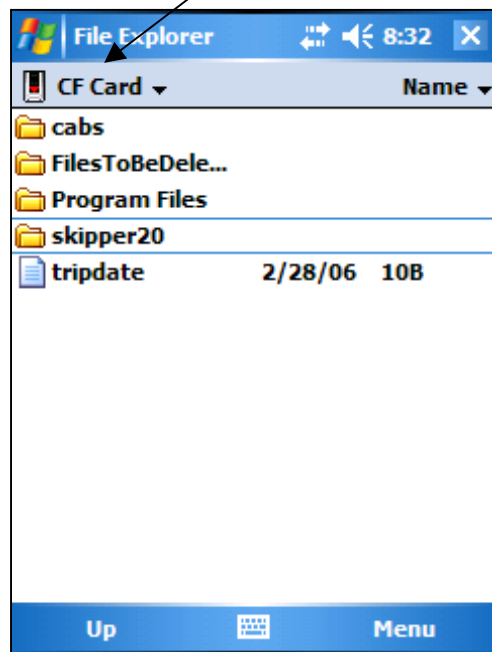
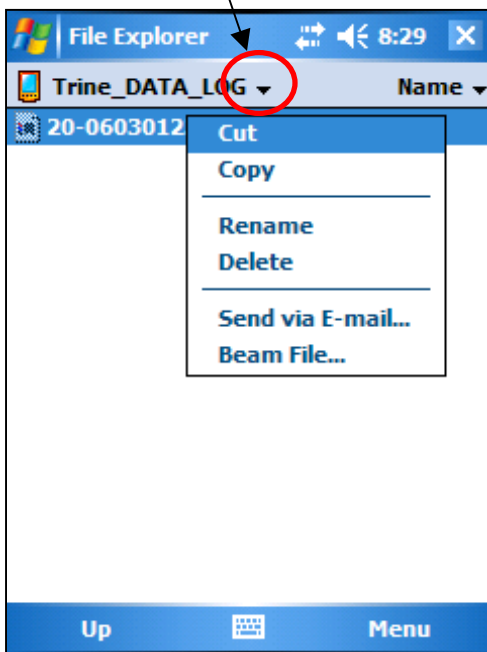


The Trine_DATA_LOG folder will contain a file with a name consisting of the Skipper (PDA) ID, followed by a hyphen, followed by the starting date of the data. (The date is a 2-digit year, month, and day, e.g., 060301.)

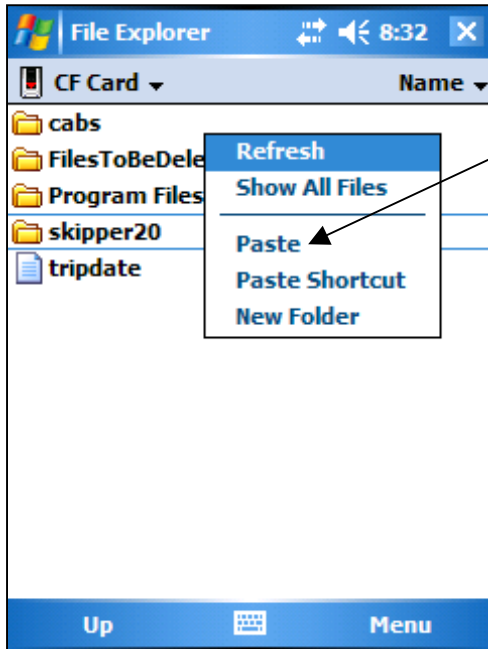
Tap and **hold** on the file name and choose **Cut** from the pop-up menu that appears.



Then tap on the **down arrow** beside Trine_DATA_LOG and choose the **CF Card**.



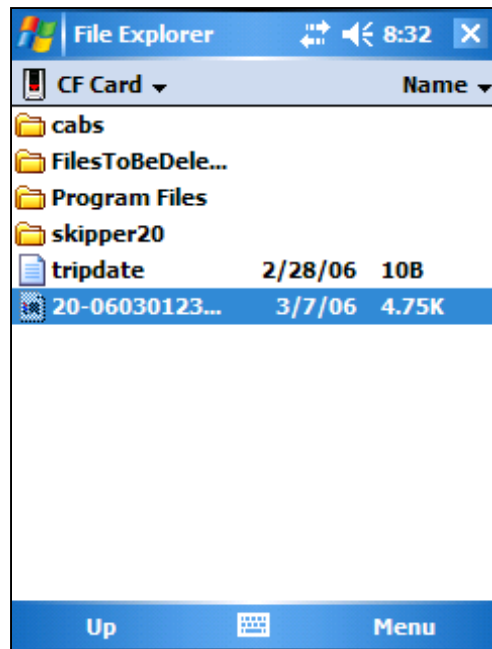
Tap and **hold** in the **white space below the files**, and a popup menu will appear. Choose **Paste**.



The file is now stored on the CF card.

If the skipper has finished the Post-Trip questionnaire, **remove the CF card** from the PDA and put it in the mailing envelope.

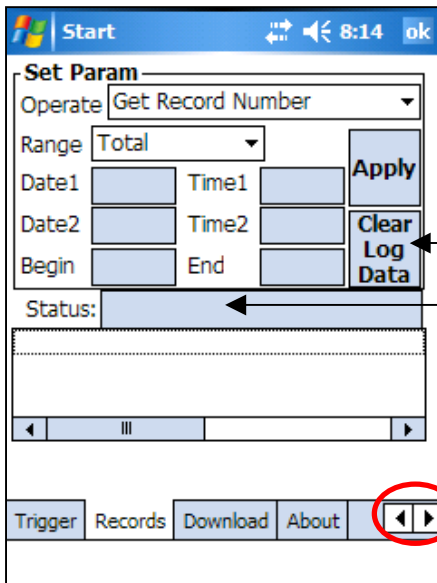
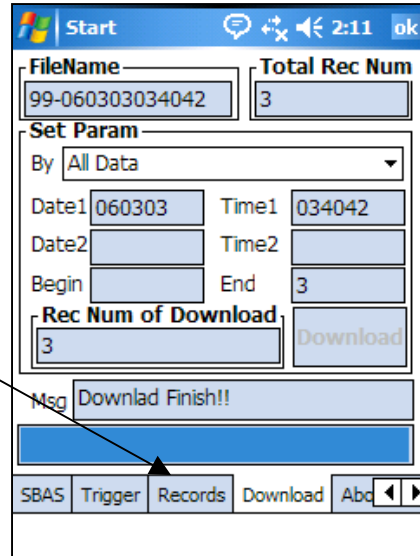
Tap on the **X in the upper right** to close File Explorer.



Now that the data is safely on the CF Card, you can clear the data from Trine GPS unit.

After you close File Explorer, you should see a CRUX_LOG screen, which you left open earlier.

To clear the data from the GPS unit, tap on the **Records** tab.



Tap on the button **Clear Log Data** to get rid of the data on the Trine.

After the data is cleared, the Status box will say "Send OK!!"

Use the **left arrow** in the lower right corner to scroll all the way to the left to the **GPS Status** tab.

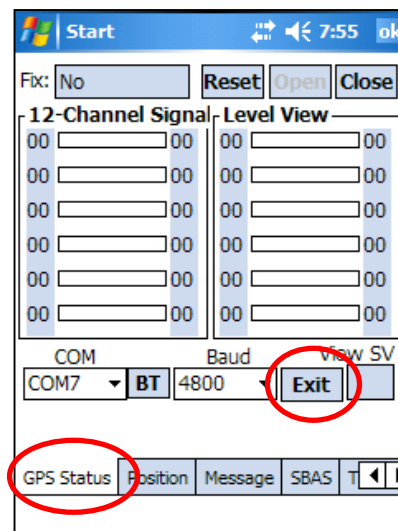
Tap on the **GPS Status** tab.

Tap on the **Exit** button in the lower right.

Now the Trine GPS is cleared,

The Trine GPS unit can be turned off between trips, but it must be turned on again before the next trip begins.

Please insert a clean CF card in the skipper's PDA and do a soft reset, so it will be ready for the next trip.



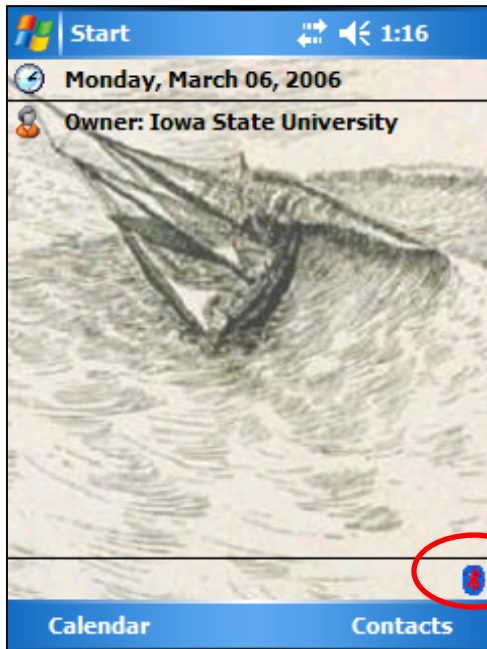
Complete the Transmittal Form in the mailing envelope before sealing/mailing it.

Pairing a Dell Axim PDA with a Trine GPS Unit.

Ideally, this section (pages 9-15) will never be needed. However, if a new Axim PDA or a new Trine GPS unit is needed to replace a malfunctioning unit, the new equipment must be “paired” or configured with the remaining unit. Follow the instructions below.

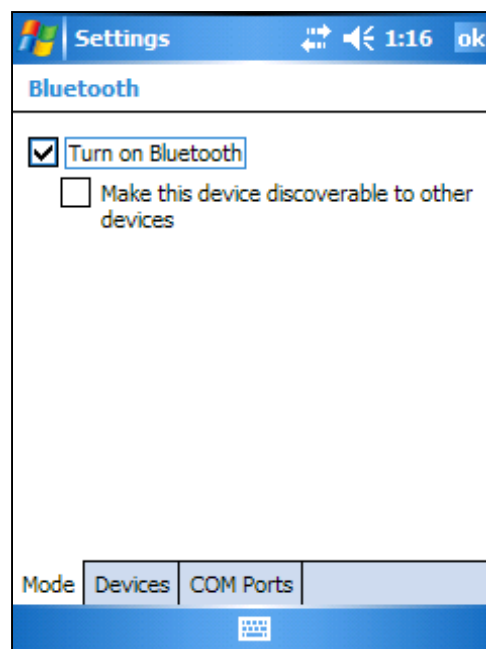
Establishing a connection through the Bluetooth Manager

Turn on both the Axim PDA and the Trine GPS units.

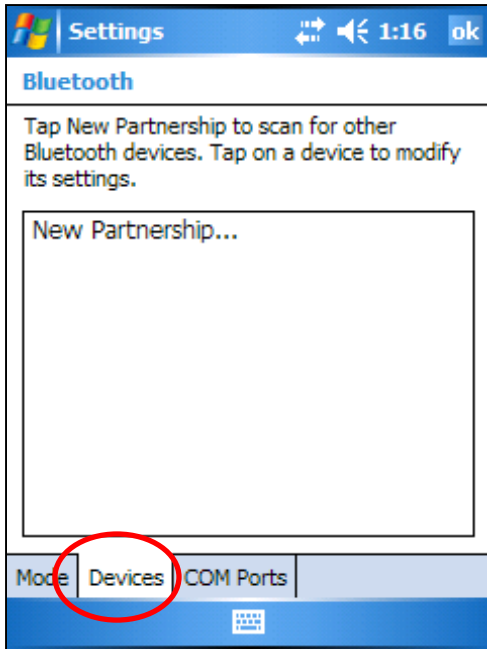


Tap on the small Bluetooth **icon** in the lower right corner of the screen.

Make sure the checkbox by **Turn on Bluetooth** is checked.



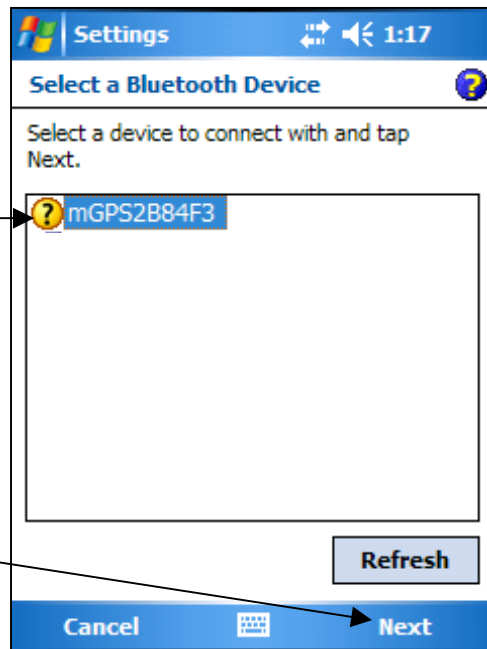
Tap on the Devices tab at the bottom.



If a partnership already exists, it will be listed below the words “New Partnership.” Delete the existing partnership. (Press and hold on the existing partnership and choose Delete from the popup box that appears.)

Then tap on the words “New Partnership...” in the box. Wait a few seconds until it finds the GPS device.

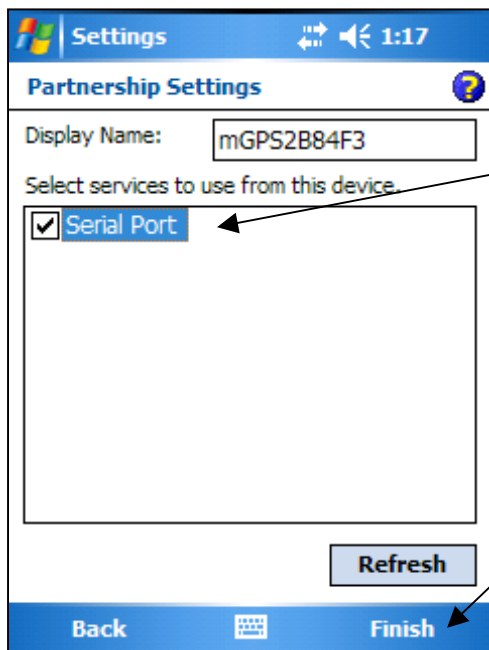
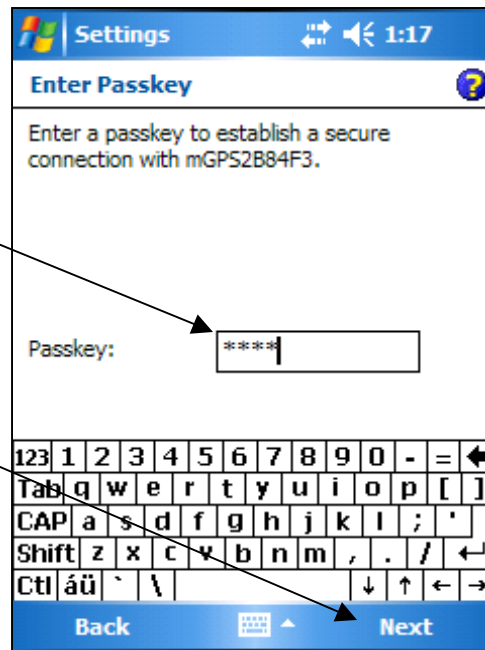
The next screen will list a couple of devices. Tap on the Trine device, which is the series starting with “mGPS”.



Then tap **Next** in the bottom right corner.

On the next screen,
enter the **Passkey: 0183**

Tap Next in the lower right corner.



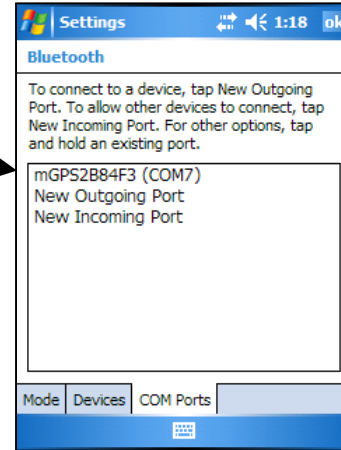
Check **Serial Port**

Then tap on **Finish** in the lower right corner.

Next select the **COM Ports tab** at the bottom of the screen. A new COM Port may or may not have automatically been created.

In this example, the new port is already there (COM7).

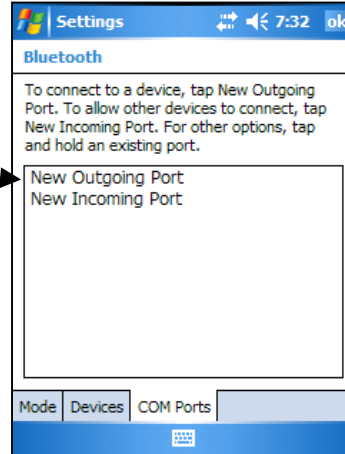
Close Bluetooth Manager by **tapping on ok** in the upper right corner. Then proceed with “Configure the Trine GPS” on page 14.



In this next example, there is no COM7 port so you will have to create one.

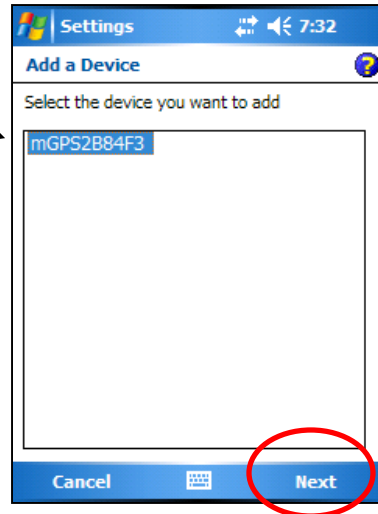
Tap on **New Outgoing Port**.

Then follow the instructions on the next page to finish creating the COM7 port.



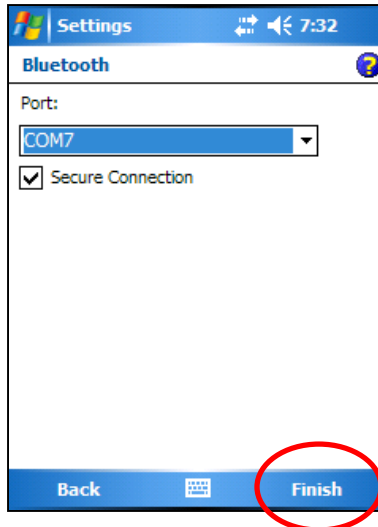
Creating a COM7 port, cont.

Select the GPS device (“mGPS” etc.) and tap **Next** at the bottom right corner.



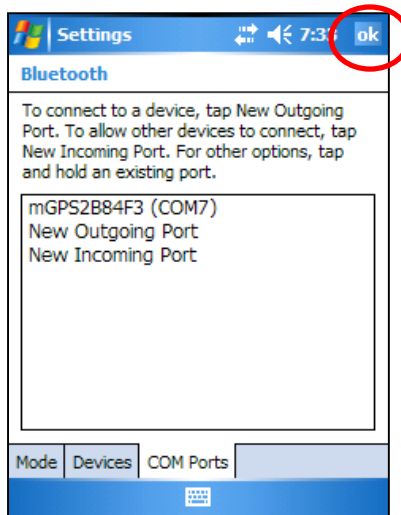
COM7 will probably already be displayed in the Port box. If not, select COM7 from the drop box.

Tap on **Finish** in the lower right corner.



Now we have our COM port and can close Bluetooth Manager by **tapping ok** in the upper right corner.

Proceed with “Configure the Trine GPS” on the next page.



Configure the Trine GPS

Now continue by configuring the Trine GPS.

Before proceeding, you need to open a keyboard because you will need it later on. Go to **Start** and select **File Explorer**. If the keyboard is not already visible, tap on the **keyboard icon** in the center of the bottom strip to open it.

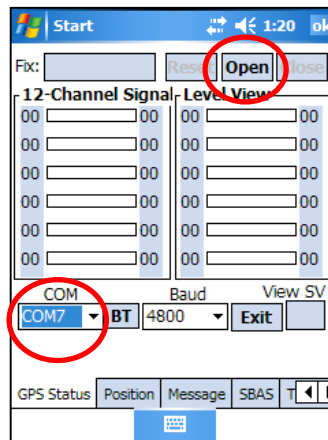
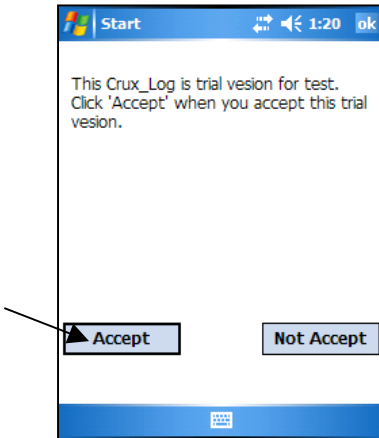
Leave this screen as it is, **go back to the Start menu** (tap on the Start icon, which still appears in the upper left corner) and **select CRUX_LOG**.



Start icon

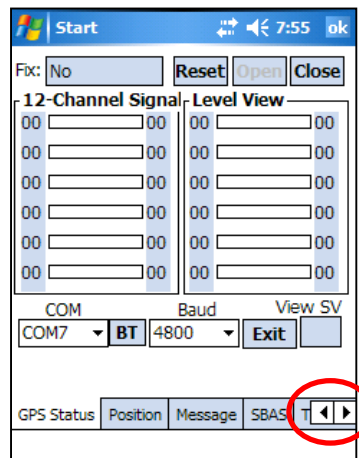
Open CRUX_LOG, as you have in the past:

- Tap on “**Accept.**”
- Make sure the correct COM Port is selected – usually **COM7**.
- Tap on “**Open.**”



After CRUX_LOG has opened, use the **arrows** at the bottom right to scroll right to find the Trigger tab.

Tap on the **Trigger** tab.

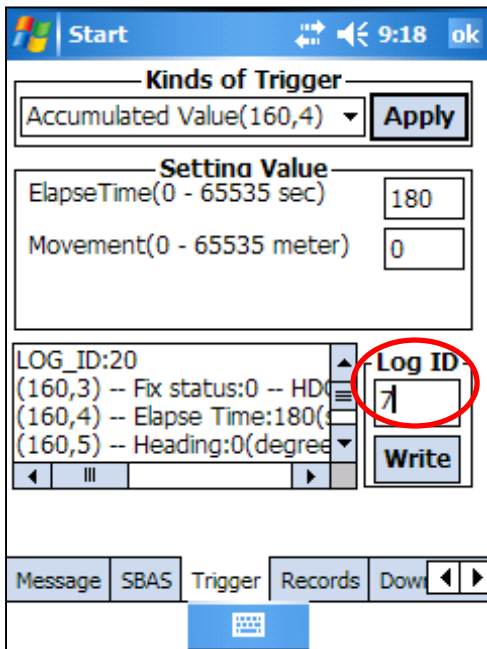
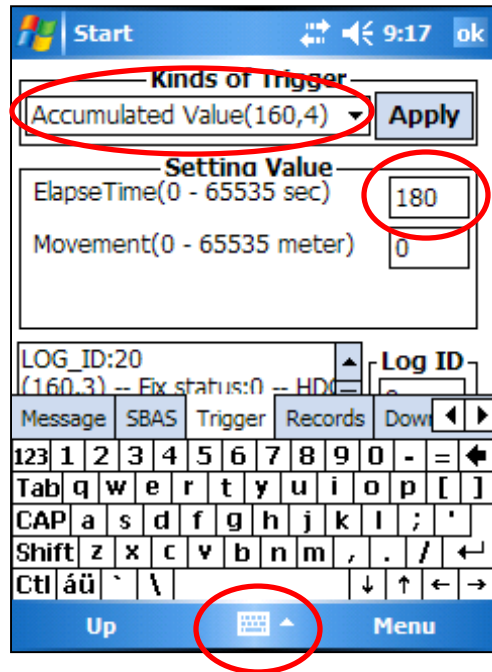


Under “Kinds of Trigger” at the top, choose **Accumulated Value**.

Tap in the box to the right of **Elapse Time** to place your cursor there. Tap on the keyboard icon in the bottom center of the screen to bring up the keyboard, and enter **180** (seconds).

Tap on the **Apply** button at the upper right to save your work.

Tap again on the keyboard icon in the bottom center of the screen to minimize it so you can see what you are doing.



In the bottom right half of the screen, tap in the **Log ID** field to place your cursor there. Use the keyboard to enter the skipper ID (the number written on the back of the PDA) into the Log ID box.

(You will have to tap the keyboard icon to open it to enter the ID number, and then tap it again to hide it.)

After entering the Log ID, tap the **Write** button.

The skipper ID will now be included in the name of the downloaded files.

You are now finished configuring the Trine. Tap on the **ok** at the upper right to close.